

LANDING ENTRANCE SCHEDULE						
*LEVEL #	*ENTRANCE DESIGNATION	*SWING	FIRE LABEL	ANCHOR TYPE	HALL CALL PDS.	COMMENTS
			B	C		
			B	C		
			B	C		
			B	C		
			B	C		

\* SEE NOTE C FOR LANDING ENTRANCE SCHEDULE

NOTES:

ADDITIONAL OR PARGING (BY OTHERS) AS REQ'D.

ANCHOR TYPE 2 & 7 ARE STANDARD & ARE "BUILT-IN" TO FRAME. THIS COMBINATION MARKED "C" ON SCHEDULE. (SEE DATASHEET OF THE INSTALLATION DRAWING FOR LANDING ENTRANCE SCHEDULE AND RUNNING CLEARANCE. ALL INFORMATION IS SUBJECT TO CHANGE. PLEASE REFERENCE OUR IN-LINE DRAWINGS AT [www.concordellevator.com](http://www.concordellevator.com) FOR THE MOST RECENT UPDATES.

GENERAL SPECIFICATIONS:

- EACH LANDING ENTRANCE SHALL BE SUPPLIED AS A FINISHED ASSEMBLY WITH DOOR AND FRAME BLANKED, REINFORCED, DRILLED AND TAPPED FOR ALL COMPONENTS DETAILED, READY FOR INSTALLATION.
- FRAMES SHALL BE 16 GA. FULLY WELDED CONSTRUCTION WITH ALL WELDED JOINTS GROUND TO A SMOOTH, UNIFORM FINISH, SUPPLIED WITH 3 CAPTIVE WALL ANCHORS PER JAMB, TO SUIT WALL CONSTRUCTION.
- DOORS SHALL BE 18 GA., 2" THICK, SWINGING, FLUSH, STEEL REINFORCED CONSTRUCTION COMPLETE WITH GLASS LITE(S) AS INDICATED.
- DOORS/FRAMES TO BE FABRICATED FROM ZINC W/PE COATED GALVANIZED STEEL WITH ZINC RICH PRIMER, FACTORY APPLIED TOUCH-UP AT THOSE AREA WHERE COATING HAS BEEN REMOVED DUE TO WELDING/GRINDING.
- UL/ULC LABELLED ENTRANCES PROVIDED AS INDICATED.

HARDWARE: FINISH

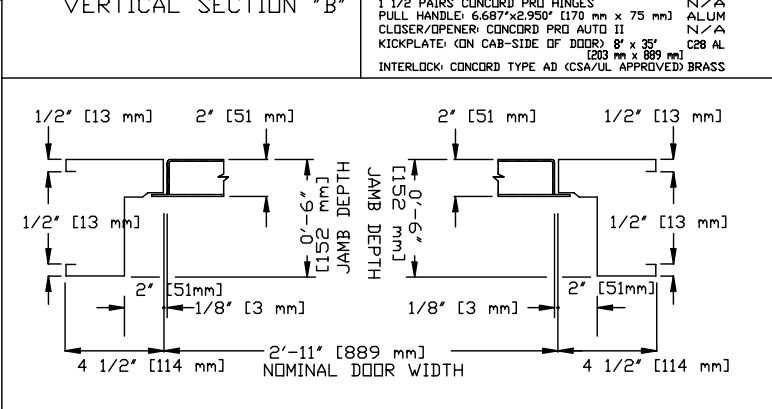
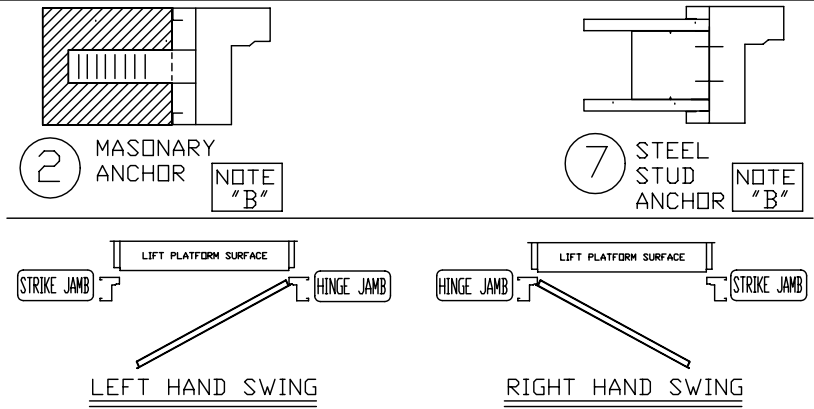
1 1/2 PAIRS CONCORD PRO HINGES N/A

PULL HANDLE: 6.687"x2.950" [170 mm x 75 mm] ALUM N/A

CLOSER/OPENER: CONCORD PRO AUTO II N/A

KICKPLATE (ON CAB-SIDE OF DOOR) 8" x 35" C28 AL [203 mm x 889 mm]

INTERLOCK: CONCORD TYPE AD (CSA/UL APPROVED) BRASS



DOCUMENT REVISION 003, DATE: 10/27/08

PRO-AUTO DOOR, 1.5 HOUR FIRE RATED INSIDE FLUSH DOOR

CUSTOMER:	DATE:
PROJECT:	REVISION:
LOCATION:	COMPLETED BY:

CONCORD ELEVATOR